



CHESS VALE

C H E S H A M

Chartridge Lane, Chesham HP5 2SE

PLOT 3

A south-west facing double-fronted four bedroom home with period features and tile-hung first floor. Plot 3 benefits from a second floor playroom plus large kitchen diner, a separate study and two parking spaces.



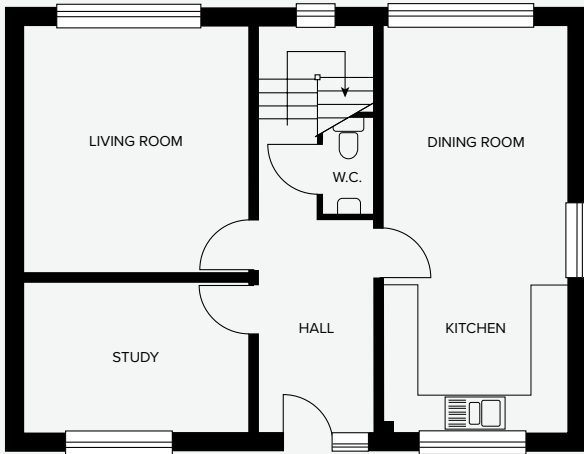
Borras
new homes

For further details or to arrange a viewing please contact us.

Borras New Homes
Tel: 07583 022907
info@chess-vale.co.uk

PLOT 3

GROUND FLOOR



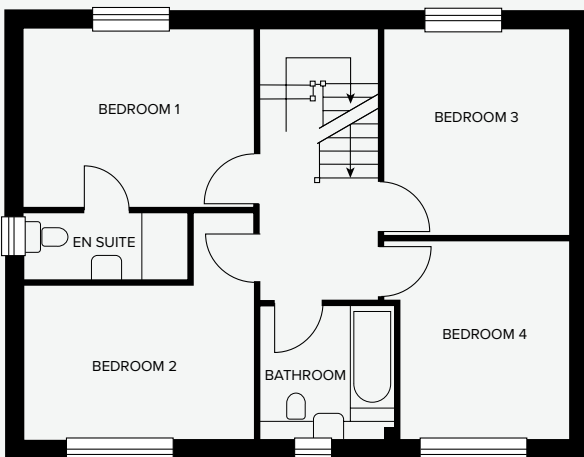
GROUND FLOOR

Living Room:
3.75 x 4.1m
12' 3" x 13' 5"

Kitchen/Dining Room:
6.5 x 3.0m
21' 4" x 9' 10"

Study:
2.5 x 3.7m
8' 5" x 12' 1"

FIRST FLOOR



FIRST FLOOR

Bedroom 1:
3.8 x 2.9m
12' 5" x 9' 6"

En Suite:
1.1 x 2.7m
3' 7" x 8' 10"

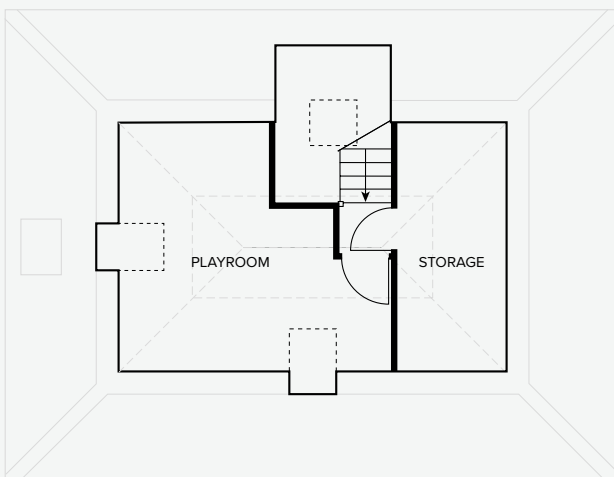
Bedroom 2:
3.8 x 3.6m max.
12' 5" x 11' 9"

Bedroom 3:
3.3 x 3.1m
10' 9" x 10' 2"

Bedroom 4:
3.3 x 2.8m
10' 9" x 9' 2"

Bathroom:
2.2 x 2.2m
7' 2" x 7' 2"

SECOND FLOOR



SECOND FLOOR

Playroom:
4.9 x 4.7m max.
16' 1" x 15' 5"

Room dimensions have been taken from their widest point, they are for guidance only and may vary from those shown.

SPECIFICATION

DOORS & WINDOWS

- IG Composite door in black finish with security hardware
- 44mm four-panel white internal doors with chrome door furniture
- White PVCu windows and external doors with multi-point locking

FLOORING

- Fully tiled family bathroom, en suite and cloakroom
- Carpeted throughout

BATHROOMS

- Roca sanitaryware and brassware
- Merlyn shower screens and trays

KITCHENS

- German Leicht cabinets
- Polished quartz worktops
- Blanco stainless steel undermount sinks and lever taps
- Siemens appliances
- All supplied and fitted by Barget Kitchens of Hampstead

HEATING & HOT WATER

- Gas central heating and hot water via combi boiler
- White radiators and chrome ladder towel rails

TV & MEDIA

- Coaxial TV points to lounge, kitchen and bedroom one

EXTERNAL FITTINGS

- Tap and power to rear
- Security lighting to front and rear

For further details or to arrange a viewing please contact us.

Borras New Homes
Tel: 07583 022907
info@chess-vale.co.uk