



CHESS VALE

C H E S H A M

Chartridge Lane, Chesham HP5 2SE

PLOT 5

A south-west facing four-bedroom home with attractive bay windows to the ground and first floor. The house has a 22ft kitchen diner overlooking the garden plus a separate study and en suite to bedroom one.



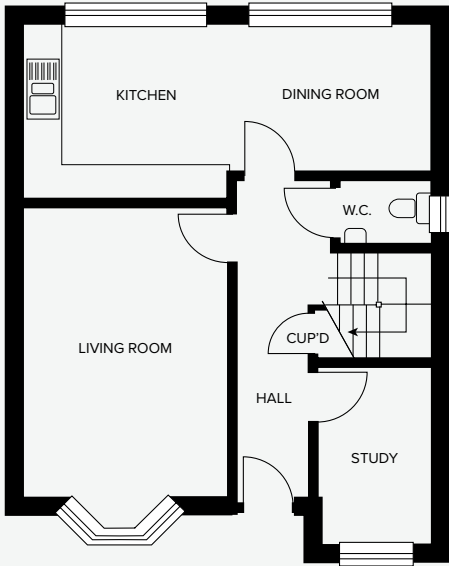
Borras
new homes

For further details or to arrange a viewing please contact us.

Borras New Homes
Tel: 07583 022907
info@chess-vale.co.uk

PLOT 5

GROUND FLOOR



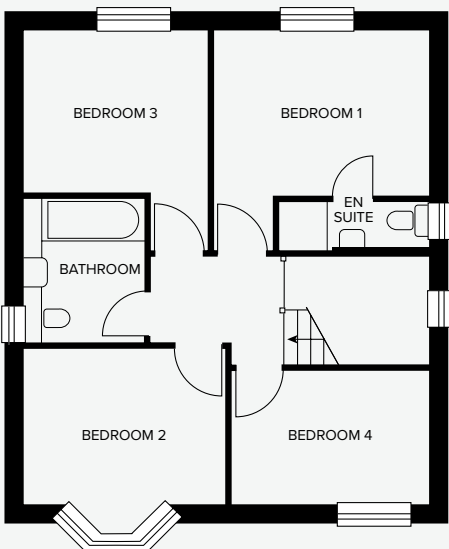
GROUND FLOOR

Living Room:
4.8 x 3.4m
15' 9" x 11' 2"

Kitchen/Dining Room:
6.8 x 2.9m max.
22' 3" x 9' 6"

Study:
2.9 x 1.9m
9' 6" x 6' 2"

FIRST FLOOR



FIRST FLOOR

Bedroom 1:
3.6 x 3.4m max.
11' 9" x 11' 2"

En Suite:
2.4 x 0.8m
7' 10" x 2' 7"

Bedroom 2:
3.3 x 2.5m
10' 9" x 8' 2"

Bedroom 3:
3.5 x 3.2m max.
11' 5" x 10' 6"

Bedroom 4:
3.2 x 2.1m
10' 6" x 6' 10"

Bathroom:
2.3 x 2.2m
7' 6" x 7' 2"

Room dimensions have been taken from their widest point, they are for guidance only and may vary from those shown.

SPECIFICATION

DOORS & WINDOWS

- IG Composite door in black finish with security hardware
- 44mm four-panel white internal doors with chrome door furniture
- White PVCu windows and external doors with multi-point locking

FLOORING

- Fully tiled family bathroom, en suite and cloakroom
- Carpeted throughout

BATHROOMS

- Roca sanitaryware and brassware
- Merlyn shower screens and trays

KITCHENS

- German Leicht cabinets
- Polished quartz worktops
- Blanco stainless steel undermount sinks and lever taps
- Siemens appliances
- All supplied and fitted by Barget Kitchens of Hampstead

HEATING & HOT WATER

- Gas central heating and hot water via combi boiler
- White radiators and chrome ladder towel rails

TV & MEDIA

- Coaxial TV points to lounge, kitchen and bedroom one

EXTERNAL FITTINGS

- Tap and power to rear
- Security lighting to front and rear

For further details or to arrange a viewing please contact us.

Borras New Homes
Tel: 07583 022907
info@chess-vale.co.uk