



# CHESS VALE

C H E S H A M

Chartridge Lane, Chesham HP5 2SE

## PLOT 6

A four bedroom home with period features including tile-hung finish to the first floor facade. This home has a generous kitchen dining room overlooking the south-west facing garden, plus two parking spaces.



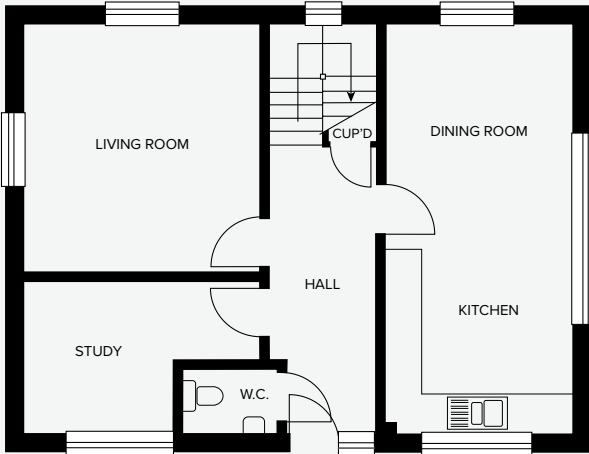
**Borras**  
new homes

For further details or to arrange a viewing please contact us.

**Borras New Homes**  
Tel: 07583 022907  
[info@chess-vale.co.uk](mailto:info@chess-vale.co.uk)

# PLOT 6

## GROUND FLOOR



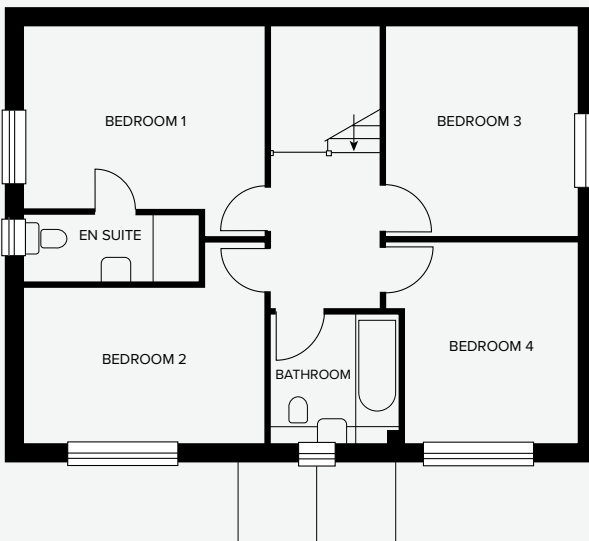
## GROUND FLOOR

**Living Room:**  
4.1 x 3.9m  
13' 5" x 2' 9"

**Kitchen/Dining Room:**  
6.7 x 3.0m  
21' 11" x 9' 10"

**Study:**  
3.9 x 2.5m max.  
12' 9" x 8' 2"

## FIRST FLOOR



## FIRST FLOOR

**Bedroom 1:**  
3.9 x 3.1m max.  
12' 9" x 10' 2"

**En Suite:**  
1.1 x 2.8m  
3' 7" x 9' 2"

**Bedroom 2:**  
3.1 x 3.1m max.  
10' 2" x 10' 2"

**Bedroom 3:**  
3.2 x 2.9m  
10' 6" x 9' 6"

**Bedroom 4:**  
3.2 x 2.9m  
10' 6" x 9' 6"

**Bathroom:**  
2.0 x 1.9m  
6' 6" x 6' 3"

Room dimensions have been taken from their widest point, they are for guidance only and may vary from those shown.

## SPECIFICATION

### DOORS & WINDOWS

- IG Composite door in black finish with security hardware
- 44mm four-panel white internal doors with chrome door furniture
- White PVCu windows and external doors with multi-point locking

### FLOORING

- Fully tiled family bathroom, en suite and cloakroom
- Carpeted throughout

### BATHROOMS

- Roca sanitaryware and brassware
- Merlyn shower screens and trays

### KITCHENS

- German Leicht cabinets
- Polished quartz worktops
- Blanco stainless steel undermount sinks and lever taps
- Siemens appliances
- All supplied and fitted by Barget Kitchens of Hampstead

### HEATING & HOT WATER

- Gas central heating and hot water via combi boiler
- White radiators and chrome ladder towel rails

### TV & MEDIA

- Coaxial TV points to lounge, kitchen and bedroom one

### EXTERNAL FITTINGS

- Tap and power to rear
- Security lighting to front and rear

For further details or to arrange a viewing please contact us.

**Borras New Homes**  
**Tel: 07583 022907**  
**info@chess-vale.co.uk**